

RECENT ADVANCES IN PATHOPHYSIOLOGY AND TREATMENT OF SPINAL CORD INJURY

Claire E. Hulsebosch

Advan in Physiol Edu 26:238-255, 2002. ;
doi: 10.1152/advan.00039.2002

You might find this additional info useful...

This article cites 140 articles, 18 of which you can access for free at:
<http://advan.physiology.org/content/26/4/238.full#ref-list-1>

This article has been cited by 8 other HighWire-hosted articles:
<http://advan.physiology.org/content/26/4/238#cited-by>

Updated information and services including high resolution figures, can be found at:
<http://advan.physiology.org/content/26/4/238.full>

Additional material and information about *Advances in Physiology Education* can be found at:
<http://www.the-aps.org/publications/ajpadvan>

This information is current as of March 28, 2013.

Advances in Physiology Education is dedicated to the improvement of teaching and learning physiology, both in specialized courses and in the broader context of general biology education. It is published four times a year in March, June, September and December by the American Physiological Society, 9650 Rockville Pike, Bethesda MD 20814-3991. © 2002 American Physiological Society. ESSN: 1522-1229. Visit our website at <http://www.the-aps.org/>.

RECENT ADVANCES IN PATHOPHYSIOLOGY AND TREATMENT OF SPINAL CORD INJURY

Claire E. Hulsebosch

*Department of Anatomy and Neurosciences, Marine Biomedical Institute,
University of Texas Medical Branch, Galveston, Texas 77555*

Thirty years ago, patients with spinal cord injury (SCI) and their families were told “nothing can be done” to improve function. Since the SCI patient population is reaching normal life expectancy through better health care, it has become an obviously worthwhile enterprise to devote considerable research effort to SCI. Targets for intervention in SCI toward improved function have been identified using basic research approaches and can be simplified into a list: 1) reduction of edema and free-radical production, 2) rescue of neural tissue at risk of dying in secondary processes such as abnormally high extracellular glutamate concentrations, 3) control of inflammation, 4) rescue of neuronal/glial populations at risk of continued apoptosis, 5) repair of demyelination and conduction deficits, 6) promotion of neurite growth through improved extracellular environment, 7) cell replacement therapies, 8) efforts to bridge the gap with transplantation approaches, 9) efforts to retrain and relearn motor tasks, 10) restoration of lost function by electrical stimulation, and 11) relief of chronic pain syndromes. Currently, over 70 clinical trials are in progress worldwide. Consequently, in this millennium, unlike in the last, no SCI patient will have to hear “nothing can be done.”

*ADV PHYSIOL EDUC 26: 238–255, 2002;
10.1152/advan.00039.2002.*

Key words: chronic central pain; apoptosis; extracellular matrix; inflammation; demyelination; stem cells

INCIDENCE AND HISTORY OF SPINAL CORD INJURY

Trauma to the spinal cord causes dysfunction of the cord, with loss of sensory and motor function distal to the point of injury. There are approximately 400,000 patients with spinal cord injuries (SCI) in the United States. The data on incidence rate are estimated to be 1 in every 1,000 people per year in the United States, and males are four times more likely than females to be involved. The leading causes of SCI are motor vehicle accidents (47%), sports-related accidents, especially diving injuries (24%), falls (12%), and violence—gun shot, knife injuries (7%). The majority of

injuries are divided into three general groups. The first group is young individuals, typically between the ages of 16 and 25 years, who sustained their injury from a motor vehicle collision or other high-energy traumatic accident. The second consists of older individuals with cervical spinal stenosis caused by congenital narrowing or spondylosis. Patients in this second group often sustained their injury from minor trauma and commonly have no vertebral fracture. The third group consists of people with gunshot wounds, which is now the leading cause of SCI in many urban areas [Spinal Cord Injury Information Network (11, 77)].

1043 - 4046 / 02 - \$5.00 - COPYRIGHT © 2002 THE AMERICAN PHYSIOLOGICAL SOCIETY

Thirty years ago, patients with SCI and their families were told “nothing can be done” to improve function beyond a “wait and see what recovers” attitude. This was due in large part to the difficulties that the health care providers faced with patient management, including urinary tract dysfunction (recurrent kidney stones, infections), secondary loss of function such as respiratory and skin (pressure sores), venous thrombosis from inactivity, and cardiac dysfunction stemming from autonomic dysfunction such as hypotension or hypertension. Thus, during World War II, the life expectancy of SCI patients was about three months. In 1966, the life expectancy was 20 years, with renal problems contributing to the majority of deaths. Currently, SCI patients have a life expectancy of 25 to 30 years beyond the initial injury, for which the contributing cause of death is cardiac and respiratory dysfunction. Thus, within the last decade, it has become an obviously worthwhile enterprise to devote considerable research effort to SCI, since this patient population is reaching normal life expectancy.

PATHOPHYSIOLOGY OF SPINAL CORD INJURY

To understand the rationale of the recent advances, it is first necessary to review the pathophysiology of spinal cord injury. There are four general types of spinal cord injury: 1) cord maceration, in which the morphology of the cord is severely distorted; 2) cord lacerations (gun shot or knife wounds); 3) contusion injury, which leads to a central hematomyelia that may evolve to syringomyelia; and 4) solid cord injury, in which there is no central focus of necrosis as in contusion injury. In the first two injuries, the surface of the cord is lacerated and a prominent connective tissue response is invoked, whereas in the latter two the spinal cord surface is not breached and the connective tissue component is minimal (23, 24). Of these four injury types, the contusion injury represents from 25 to 40% of the cases and is a progressive injury that enlarges over time. The most commonly used animal model in SCI research is patterned after the contusion injury (6, 13). Within these four injury types, degree of completeness must be considered, as incomplete lesions will benefit more dramatically from experimental interventions than complete lesions in terms of degree of recovery that can be

obtained. It is important to note that the clinical presentation of SCI is most often characterized as an anatomically incomplete lesion, irrespective of initial neurological presentation (37, 73).

There are three phases of SCI response that occur after injury: the acute, secondary, and chronic injury processes (124–126). In the acute phase, which encompasses the moment of injury and extends for the first few days, a variety of parallel pathophysiological processes begins. Upon initial impact or injury, there is immediate mechanical damage to neural and other soft tissue, including endothelial cells of the vasculature. Thus necrosis, or cell death, results from these mechanical and ischemic insults, is instantaneous, and, in a contusion injury, appears to be more predominant in the grey matter of the spinal cord than in the white matter, resulting in a ring of preserved white matter at the contusion site (Fig. 1). After the insult, over the next few minutes, the injured nerve cells respond with an injury-induced barrage of action potentials. Accompanying this are significant electrolytic shifts, principally involving the monovalent and divalent cations Na^+ (intracellular concentrations increase), K^+ (extracellular concentrations increase), and Ca^{2+} (intracellular concentrations increase to toxic levels), that contribute to a failure in normal neural function and spinal shock, which lasts for about 24 hours and represents a generalized failure of circuitry in the spinal neural network. Hemorrhage occurs, with localized edema, loss of microcirculation by thrombosis, vasospasm and mechanical damage, and loss of vasculature autoregulation, all of which further exacerbate the neural injury. Furthermore, compression of the spinal cord occurs as a result of vertebral displacement followed by edema and later by fibrotic responses, contributing further to the neural injury. Because in the best circumstances the time to admission after spinal cord injury is about three hours, the immediate acute injury processes do not offer a clinically useful target for therapeutic intervention unless the Emergency Medical Service can adapt an easy-to-administer intervention, and/or the population adopts a preventative stance, such as taking aspirin once a day to prevent cardiac death after an episode of cardiac ischemia as recommended by the American Heart Association. In contrast, the secondary and chronic injury processes, because these occur

Tissue Loss after Spinal Cord Injury

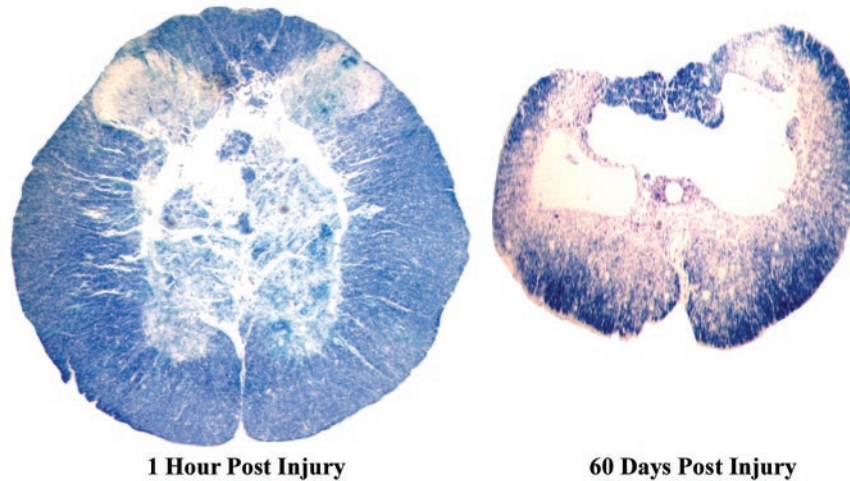


FIG. 1.

Not trivial was the development of an animal model of spinal cord injury (SCI) that mirrored the pathophysiology of human SCI. The most popular model is the rodent contusion model, which produces a necrotic core, principally in the central grey matter, that is surrounded by histologically normal-appearing myelinated fibers and portions of grey matter from both dorsal and ventral horns (*left*). Similar to human SCI pathophysiology, the cell loss continues radially in all directions, so that the lesion expands over time. By 60 days post-SCI, there remains only a thin rim of white matter (*right*). It should be obvious that massive cell death occurs immediately after the initial impact in the central core region. These cells are not rescuable. However, cell death continues to occur over several days and weeks and offers an opportunity for therapeutic intervention to rescue the neural cell populations that are at risk of dying after the first few hours.

within minutes to weeks after injury, are strategically better for therapeutic targets.

In the secondary phase (which occurs over the time course of minutes to weeks), the ischemic cellular death, electrolytic shifts, and edema continue from the acute phase. Within the first 15 minutes after injury, extracellular concentrations of glutamate and other excitatory amino acids reach cytotoxic concentrations that are six- to eightfold higher than normal as a result of cell lysis from mechanical injury and both synaptic and nonsynaptic transport. In addition, lipid peroxidation and free-radical production also occur as a result of glutamate receptor-activated and subsequently mediated pathways. Apoptosis—a secondary, programmable cell death different from necrosis—occurs and involves reactive gliosis that includes increased expression of glial fibrillary acidic protein

(GFAP) and astrocytic proliferation. Neutrophils (which secrete myeloperoxidase) invade the spinal parenchyma from the circulatory system within 24 hours, followed by lymphocytes (which secrete a variety of cytokines and growth factors) that invade and reach peak numbers within 48 hours. The invading inflammatory cells increase the local concentrations of cytokines (cyto = ‘cell’; kine = ‘small protein’) and chemokines (chemotactic cytokine). In addition, inhibitory factors and/or barriers to regeneration are expressed in the perilesion site. The lesion grows in size from the initial core of cell death with cells at risk of dying in the perilesioned region, to a larger region of cell death (Fig. 1). Finally, in the chronic phase, which occurs over a time course of days to years, apoptosis continues in both orthograde and retrograde directions including brain regions; a variety of receptors and ion channels are altered in

expression levels and activation states, scarring and tethering of the cord occurs in the penetrating injuries (about 25% of all SCI); demyelination results in conduction deficits; a cyst forms in a subset of all SCI patients (~20%), and continues to enlarge in a condition called syringomyelia; cut and nearby uncut axons exhibit regenerative and sprouting responses but go no farther than 1 mm; neural circuits are altered due to changes in inhibitory and excitatory input; and in many cell types, permanent hyperexcitability develops, which results in chronic pain syndromes in a majority of SCI patients (32, 33).

INTRINSIC FACTORS OF CNS NEURONS TO REGENERATE

Classically, central nervous system (CNS) neurons were thought to be incapable of regeneration. Early work by Liu and Chambers in 1958 (80) indicated that central projections of primary afferent fibers can sprout in the spinal cord. Thus, for certain neuronal populations, principally those without myelin, regenerative sprouting in the spinal cord can occur (67, 122). Subsequent work by Peter Richardson with Albert Aguayo and others (109) demonstrated that a peripheral nerve bridge provides an environment that promotes axonal elongation, given the stimulus of axotomy or, in some cases, priming the regenerative process by cutting sister processes of the regenerating CNS neuronal population. Essentially, the intrinsic ability of CNS neurons to demonstrate axonal regeneration was supported by the presence of key proteins involved in neurite elongations: growth-associated protein (GAP)-43 (100), expression of the immediate-early genes, and the protooncogene, such as Bcl-2 (122). However, certain populations of regenerating axons do not express GAP-43, suggesting that the expression of growth-related genes is not sufficient for successful regeneration and that extrinsic factors should be targeted. For example, factors should be examined that play an important role in expression of genes in CNS neurons or glial populations that would stimulate regeneration of axons or provide an appropriate environment that is “permissive” for regeneration and prevent neuronal/glial death. It is obvious that this must be a combinatorial approach.

TARGETS FOR INTERVENTION IN SCI

Thus targets for intervention in SCI toward improved function can be simplified into a list: 1) reduction of edema and free radical production, 2) rescue of neural tissue at risk of dying in secondary processes such as damage by abnormally high extracellular glutamate concentrations, 3) control of inflammation, 4) rescue of neuronal/glial populations at risk of continued apoptosis, 5) repair of demyelination and conduction deficits; 6) promotion of neurite growth through improved extracellular environment, 7) cell replacement therapies, 8) efforts to bridge the gap with transplantation approaches, 9) efforts to retrain and relearn motor tasks, 10) restoration of lost function by electrical stimulation, such as bladder and bowel function or hand function, and 11) relief of chronic pain syndromes (Fig. 2).

1) Reduction of Edema and Free Radical Production

Several strategies have been applied to acute SCI management. Certainly, the most immediate concern is patient stabilization through hemostasis and decompression and stabilization of the vertebral column to prevent further trauma. This is achieved by a variety of surgical rods, pins, and wires that must be judiciously placed because the surgical procedure involved may produce additional spinal trauma. Within the last decade, one focus of acute treatment has been the reduction of edema and/or the inflammatory response with steroids, the most successful of which is methylprednisolone (MP). The administration of a high dose of MP, if given within eight hours in patients with both complete and incomplete SCI, as proposed by the National Acute Spinal Cord Injury Study (NASCIS-2), has been promising with respect to improved clinical outcome (15). The cellular and molecular mechanisms by which MP improves function are not clear but may involve antioxidant properties, the inhibition of inflammatory response, and/or a role in immunosuppression (16, 58). MP, a glucocorticosteroid, may exacerbate acute neuronal necrosis in the high doses necessary; therefore, a potent inhibitor of lipid peroxidation without glucocorticosteroid activity, tirilazad mesylate (referred to as a lazaroid) might be desirable. Lazaroid has been shown to be neuroprotective and has fewer side effects than MP (57). Other pharmacological compounds with antiox-

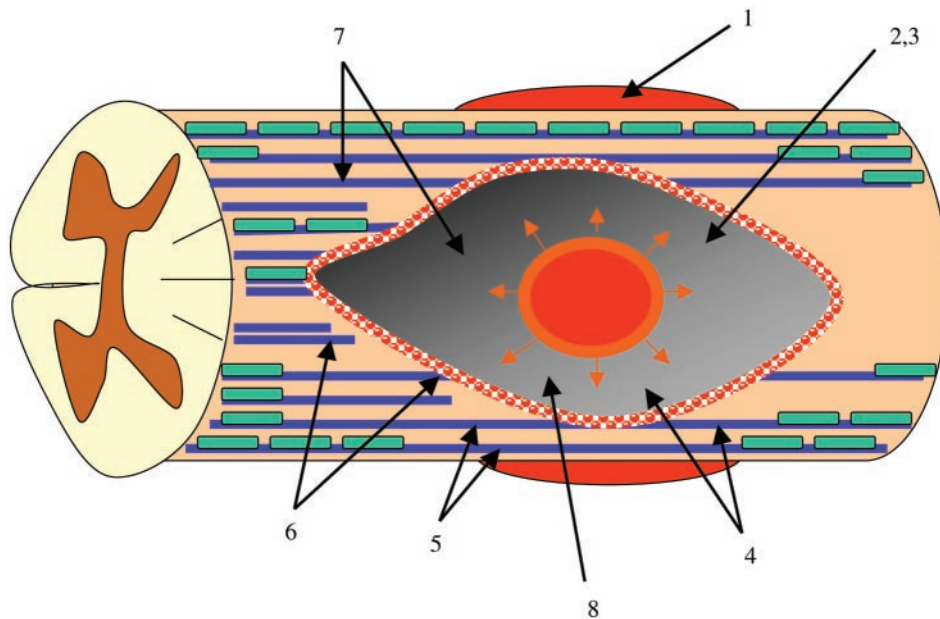


FIG. 2.

Schematic of a piece of spinal cord that has sustained an initial injury (black central oval) that spreads progressively outward and radially (red circular region followed by orange circular region) in zones until it finally reaches the final lesion size (grey shaded area). Blue lines represent axons, and green rectangles are the myelinating cells of the central nervous system, oligodendrocytes. As noted in the text, there are several opportunities for intervention, which correspond to the numbers on the schematic diagram: 1) reduction of edema and free radical production, 2) rescue of neural tissue at risk of dying in secondary processes such as abnormally high extracellular glutamate concentrations, 3) control of inflammation, 4) rescue of neuronal/glial populations at risk of continued apoptosis; 5) repair of demyelination and conduction deficits, 6) promotion of neurite growth through improved extracellular environment, 7) cell replacement therapies, 8) efforts to bridge the gap with transplantation approaches. Not shown on the schematic diagram but discussed in the text are the 9) efforts to retrain and relearn motor tasks, 10) restoration of lost function by electrical stimulation, and 11) relief of chronic pain syndromes.

idant properties that have been successful in animal models of SCI include cyclosporin A, EPC-K1, which is a phosphate diester linkage of vitamins E and C, melatonin, and high-dose naloxone, which has some demonstrated efficacy in clinical trials (14).

2) Inhibition of Glutamate Toxicity: Stopping the Excitotoxicity Cascade

Different models of SCI have indicated that glutamate receptor antagonists may be useful therapeutic strategies in terms of improved behavioral outcome and neuroprotection. The noncompetitive *N*-methyl-D-aspartate ion channel blocker MK-801 (dizocilpine, Merck) (43, 96, 131) as well as 1,2,3,4-tetrahydro-6-

nitro-2,3-dioxobenzof[*f*]quinoxaline-7-sulfonamide (NBQX), a soluble α -amino-3-hydroxy-5-methyl-4-isoxazolepropionate (AMPA) receptor antagonist (50, 79, 146) have both demonstrated significant improvements in the contusion model of SCI in outcome measures that include measures of improvement in behavior and neuroprotection. In the case of NBQX, the neural protection occurs principally in the oligodendrocyte population (112). In other models of SCI, the NMDA antagonists gacyclidine (GK-11; Beaufour-Ipsen) (45) and agmatine, which also inhibits nitric oxide synthase, have demonstrated neuroprotective effects (151). More recently, the group I metabotropic glutamate antagonists have demonstrated both

behavioral improvements and neural protection after contusion SCI (91).

As more of the secondary pathways activated by the excitotoxicity cascade are elucidated, more intervention opportunities will arise. For example, the production of nitric oxide was recently identified as a major contributor to neural cell death after SCI (81, 114). Although no posttreatment studies exist, pretreatment with *N*^G-nitro-L-arginine methyl ester (L-NAME) has demonstrated some morphological improvements (153). Another promising intervention is activation of A1 adenosine receptors either by adenosine or a selective receptor agonist in a site-specific manner. Both approaches have demonstrated neuroprotective properties (99).

3) Inflammation: Inhibition by Anti-Inflammatory Agents

Although inflammation is generally held to be an endogenous repair mechanism that is restorative in nature, recent work has demonstrated that the inflammatory cascade produces several pathways that are degradative in nature, such as the prostaglandin pathways. Consequently, anti-inflammatory agents have been tried with some success. One novel idea was the intravenous application of an antiangiogenic compound CM101 one hour after SCI in mice with the intent of preventing inflammatory angiogenesis and inhibiting gliosis. CM101 improved locomotion and appeared to be neuroprotective (133). Administration of the anti-inflammatory cytokine IL-10 has a neuroprotective role, although the improvement in locomotor behavior that was first reported (12) has been retracted by the same group (123). Most likely, improvements in behaviors involving trunk musculature innervation would have revealed differences, since thoracic grey matter was preserved. In three different laboratories, selective cyclooxygenase (COX)-2 inhibitors given systemically have demonstrated significant improvements in both behavioral and neuroprotective outcome measures (56, 107, 150) in the rodent model of contusion SCI. Of the anti-inflammatory agents, the selective inhibition of the inducible COX-2 enzyme appears to be the safest to begin phase I clinical trials. In addition, inhibition of proinflammatory agents, such as inhibition of the IL-1 β receptor,

has resulted in improved behavioral outcomes after spinal cord injury (96).

Promising phase I clinical trials for neurotrauma include the application of either whole body hypothermia or local cord cooling (60, 62, 129). Application of hypothermia, either spinally or systemically, is thought to provide protection for neural cells with increased secondary sensitivity to neural death and to reduce secondary inflammation, decreasing immediate mortality. The mechanism may be related to the inhibition of increases in extracellular concentrations of excitatory amino acids. Local spinal cord cooling within eight and a half hours of injury in ten patients produced a better-than-expected rate of recovery of sensory and motor function and reduction in mortality rate compared with more traditional forms of therapy (60), which confirmed earlier studies with eight SCI patients treated by irrigation with 5°C saline for two hours (21).

4) Apoptosis-Rescue from Neural Cell Death

The recognition of delayed cell death after CNS trauma has been described long ago as Cajal's seminal studies early in the twentieth century (35). Because cells die due to a programmed cell death after SCI, an excellent opportunity is present for intervention with factors that could rescue the cells at risk, both neuronal and glial (7, 34, 42, 82). One approach to cell rescue is the inhibition of caspases. Caspases are cysteine-dependent, aspartate-specific proteases that cleave at specific sites within proteins, with a nearly absolute requirement for aspartate at the cleavage site. Unlike other proteases that are degradative in nature, caspases are regulated signaling proteases and are activated by proteolysis and are thought to play an important role in mediating cell apoptosis (18, 41). There is a growing list of companies, including Glaxo-SmithKline, Aventis, Idun, and Vertex, that are currently working on novel caspase inhibitors that can be tried in clinical phase I trials (14). These proteins are a part of the bcl-2 oncogene products, which are potent death suppressors, and inhibit programmed cell death in neurons as well as in lymphoma and other types of cancer. However, the Bcl-2 family is composed of both death suppressor and death promoter proteins that are normally in a checked and balanced system (51). Recent work in a model of SCI

has demonstrated rescue by direct injection of a plasmid encoding the Bcl-2 protein into the damaged site (121). Because Bcl-2 is a membrane-bound mitochondrial protein, cells that are rescued must have retrogradely transported the Bcl-2 to the neuronal soma.

Another group of proteins that has received attention for their role in cellular degradation in both necrosis and apoptosis is the calpains. Calpains are calcium-activated proteases that play important roles in cytoskeletal degradation of damaged cells. Thus calpain inhibitors would be expected to reduce or delay apoptosis. Several companies have compounds that demonstrate some improvement in behavior and tissue preservation in models of SCI, such as Taisho Pharmaceutical and Cephalon (14). GM1 ganglioside (Sygen; FIDIA Pharmaceutical), a natural component of cell membranes, is thought to aid in both regenerative responses and have some neuroprotective role, but the mechanism(s) of action is unknown. In a recent multicenter trial of 760 patients, Sygen in combination with MP showed a trend in improved outcomes in terms of improved motor, light touch, and pinprick scores and bowel, bladder, and sacral function (46, 47).

Finally, delivery of exogenous neurotrophins have long been considered therapeutically useful for rescuing cells that lose neurotrophic support due to cell death of projection neurons, the innervation target, or ensheathing cells (oligodendrocytes). Neurotrophins (neuro-‘relating to nerve cells’; trophe-‘nutrition’) that have been administered with some success in SCI include nerve growth factor (NGF), glial-derived neuronotrophic factor (GDNF), ciliary neuronotrophic factor (CNTF), neuronotrophic factor-3 and 4/5 (NT-3, NT-4/5), fibroblastic growth factor (FGF), and brain-derived neuronotrophic factor (BDNF). Delivery systems include intrathecal administration by direct injections through catheters attached to indwelling osmotic pumps, through genetically engineered biological delivery systems such as transduced fibroblasts or immortalized cell lines, and by direct injection of genes into the spinal parenchyma at the injury site (72, 75, 76, 116, 122).

5) Demyelination and Conduction Deficits

The correlation of increased neural death with increased electrical activity offers an opportunity for

intervention. It is well known that, concomitant with neural injury, a barrage of action potentials is produced that causes massive release of transmitter substances. This massive release, coupled with the ionic shifts, can result in neural cell death. The strategy of inhibiting the neural injury induced by the increased barrage of action potentials early in the injury phase or by inhibiting the voltage-dependent sodium channels, which provide the ionic basis for the action potential, is novel but may be fruitful. For example, the sodium channel blocker tetrodotoxin demonstrated a rescue of neural tissue and improved behavioral recovery (112). In addition, neural injury and disease may introduce altered ionic channel function on nerve processes that would result in impaired conduction properties (134), which produces persistent hyperexcitability leading to the basis for chronic pain after CNS neural trauma (38, 135). Thus ionic channel blockers may prove effective in attenuating neural damage and dysfunction.

Along these lines, it is important to note that many axons are demyelinated as a result of secondary injury to the spinal cord. Infusion of the fast, voltage-sensitive potassium channel blocker 4-aminopyridine (4-AP) (59, 63, 117) looks extremely promising and is now in phases II and III clinical trials at Acorda (69) and Washington University. 4-AP’s utility is based on the exposure of the internodal potassium channels that occurs as a result of demyelination, which considerably alters conduction properties in surviving demyelinated axons. Application of 4-AP blocks potassium channels and partially restores conduction properties. Phase I trials of 4-AP given in doses of 6–30 mg/kg (59, 63, 117) demonstrated increased motor control and sensory ability below the injury and reduction in chronic pain and spasticity and restored voluntary bowel control in a subset of patients. (59, 63, 118). Another strategy for demyelination is the transplantation of cells that may produce new myelin and thus restore conduction deficits. Cells that have been tried with some success in animal models include olfactory ensheathing cells, oligodendrocytes, and Schwann cells (see discussion on Cell Replacement Strategies below).

6) Promoting Axonal Regeneration: Matrix Proteins, Inhibitory Factors, and Neurotrophins

Since Cajal’s time, it has been understood that nerve cells in the CNS grow a millimeter or so and no

longer. However, nerve cells have the intrinsic machinery necessary for neurite growth; consequently, the external environment must be nonpermissive to neurite growth. There are several strategies that are currently targeted to provide permissive environments to neurite growth. During neural development, a variety of neurite-promoting and guidance molecules exist in the extracellular matrix that are subsequently downregulated in the adult CNS, permitting stable and complex circuitry. Thus, in the adult CNS, the balance of factors that support neurite growth and factors that inhibit neurite growth shifts toward enhanced expression of growth-inhibiting molecules. After SCI, many of the neurite guidance factors are reexpressed and may provide strategies for neurite growth if better understood. The field of extracellular matrix materials has recently exploded, providing families of highly conserved attractant and repulsive guidance molecules such as netrins (152), semaphorins (98), ephrins (74), tenascins (71), integrins, and a variety of matrix proteoglycans, including chondroitin sulfate proteoglycans (CSPG) (149). The extracellular matrix proteins are emerging as key players for the failure of injured central neurons to regenerate. Reports of functional recovery in rats with dorsal column lesions treated with chondroitinase ABC suggests that removal of the glycosaminoglycan CSPG will be useful in regeneration (17). Although it is early in the field of SCI research for this area to have made a contribution, the extracellular matrix proteins will be an important consideration in a combinatorial approach for successful regeneration of axons after injury.

Perhaps the best known of the inhibitory factors is NoGo, which was first detected as a high-molecular-weight inhibitor in myelin (28, 29). The IN-1 antibody, which neutralized the inhibitory protein activity of NoGo, has been shown to encourage long tract regeneration. For example, hybridoma cells secreting IN-1 antibody increased the number of corticospinal axons that grew around a spinal cord lesion (115) and resulted in some improvement in hindlimb function (20). The inhibitory protein NoGo was only recently identified (30). Nonetheless, this promising therapy will soon be in phase I clinical trials sponsored by Novartis. Another myelin-derived growth-inhibitory protein, myelin-associated glycoprotein (MAG), was identified by two laboratories independently (90, 93) and has been characterized both *in vitro* and *in vivo* (89).

In the perilesioned region, growth-inhibitory proteins are present at the glial scar and represent an important barrier to axon growth. Reactive astrocytes form many different kinds of CSPG. CSPG proteins that inhibit axonal growth include versican, phosphocan, NG2, and neurocan (89). The CSPGs are thought to be expressed by reactive astrocytes, oligodendrocyte precursor cells, and meningeal cells, among other cell types (89). Consequently, one approach to limiting the inhibitory barrier at the lesion site is to eliminate the astrocytes by a variety of techniques. Direct injection of ethidium bromide, which binds to cellular DNA and RNA and thus kills the cells by disrupting cell function, has been used experimentally, since these techniques, if directed appropriately, will target white matter cells, including glial cells, while leaving axons of passage uninjured. A second approach has been the application of site specific X-irradiation. High doses of X-irradiation have been reported to reduce astrogliosis and improve motor recovery. Finally, chemically specific glial cytotoxins may be useful toward reducing the glial barrier (88); however, these three approaches have the obvious contraindications that a selective removal of astroglial cells is critical and these approaches are likely to remove a considerable number of astrocytes. Because astrocytes have an essential role in general CNS homeostasis, there will certainly be some unintended negative consequences (88). Agents that degrade the CSPG should also prove useful. Reports of improved function in rodents after treatment with chondroitinase ABC appear promising (17).

Another approach to stimulating axonal growth is to use local delivery of neurotrophins (neuro = 'relating to nerve cells'; tropin = 'a turning') by techniques described above for neurotrophins. Interestingly, the factors that are neurotrophic also serve as neurotrophins for specific cell populations. For example, NGF stimulates the sprouting of fine, primary afferent fiber systems, which, unfortunately, are the pain fibers. NT-3 has been demonstrated to potentiate corticospinal growth (116). It is obvious that subsets of nerve cells will respond differently to each growth factor, so that a combinatorial approach will be needed to encourage robust regeneration of several systems. Recently, treatment with intrathecal infusion of NGF, NT-3, GDNF, and BDNF demonstrated some success in regeneration of cut dorsal roots into the

dorsal root entry zone. Of these, GDNF demonstrated the best anatomical, functional, and behavioral recovery, whereas the mechanisms involved in the other treatments were likely due to collateral sprouting of undamaged primary afferent populations above and below the cut dorsal root (105).

Approaches that act through direct intracellular mechanisms in the nerve cell body to promote neurite growth should prove useful. Recent findings with inosine, a purine nucleoside (10), and cAMP (104) that have demonstrated neurite outgrowth promotion in vitro and in the rodent spinal cord are encouraging. Currently in clinical trials for SCI is the compound AIT-082, a synthetic hypoxanthine derivative containing a para-aminobenzoic acid moiety (Neotrofin; NeoTherapeutics), which had been shown to promote both axonal sprouting and the production of NGF, NT-3, and bFGF in astrocytes in culture systems and in vivo (36). Currently, there are four rehabilitation centers testing Neotrofin in subacute (≤ 21 days of injury) spinal cord injuries: Ranchos Los Amigos, Gaylord, Craig, and Thomas Jefferson Rehabilitation Centers.

7) Cell Replacement Strategies

After injury, with resultant loss of both nerve cells and cells that provide the myelin for appropriate conduction properties, the obvious solution would be to provide cells that can replace the lost function. A variety of tissues and cells have been added to the adult spinal cord to encourage restoration of function. These include stem cells, olfactory ensheathing cells, (the cells that form the myelin on olfactory nerves), Schwann cells (the cells that form the myelin on peripheral nerves), dorsal root ganglia, adrenal tissue, hybridomas, peripheral nerves, or transplanted conduits of Schwann cells, which would serve as a source for chemical and mechanical guidance. It is postulated that these tissues would rescue, replace, or provide a regenerative pathway for injured adult neurons, which would then integrate or promote the regeneration of the spinal cord circuitry and restore function after injury (154). Because many nerve fibers persist as demyelinated fibers, considerable effort has been directed toward the transplantation of cells that may produce new myelin and thus restore conduction deficits. Cells that have been tried with some

success in animal models include olfactory ensheathing cells (85), oligodendrocytes, Schwann cells (22), and stem cells (86, 141, 154). Altering the secretory products of transplanted cells by modifying the cells with molecular techniques holds great promise in the future (72, 101), particularly when the addition of only one factor will produce improvements of behavior, such as relief of chronic pain (55, 64).

Gene therapy allows the engineering of cells, which combines the therapeutic advantage of the cells in combination with a gene delivery system. For example, if delivery of neurotrophins is desired, a combination of cells that will form myelin and secrete neurotrophins can be engineered to both promote neurite growth and restore nerve function. For example, an attractive cell population for transplant studies is fibroblasts. Advantages of fibroblasts include the following properties: 1) ability to clinically harvest a patient's own fibroblasts, 2) ability to culture patient's fibroblasts with rapid proliferation in vitro, and 3) accessibility to transfection with a desired gene and transplantation. Rodent syngenic fibroblast cells transfected with NGF demonstrated some success with neurite growth of cells that respond to NT3 (52), but these cells eventually become tumorigenic and produce collagen, not normally found in the spinal cord. The fundamental idea of harvesting cells from prospective patients led to targeting other harvestable cell types for gene therapy. Other cells that have been transfected with neurotrophins and demonstrated some success in terms of promoting neurite growth and some behavioral recovery include Schwann cells (72, 94, 136) and embryonic neural precursors (55, 147).

In an effort to enhance beneficial effects of endogenous cell populations, the addition of a patient's own activated macrophages, which have some efficacy in animal models, is in phase II clinical trials in Belgium and the Weizmann Institute (www.proneuron.com). Macrophages from the patient's own blood (autologous macrophages) are activated and implanted at the site of the spinal injury. The rationale is that the patient's own activated macrophages will scavenge degenerating myelin debris, rich in nonpermissive factors, and thus encourage regenerative growth without eliciting an immune response. In another open clinical trial, transplantation of porcine fetal spinal cord cells, pretreated with F(ab')₂ immuno-

modulation, will be placed directly into the undamaged spinal cord adjacent to focal spinal lesions. The purpose is to provide cells that will stimulate repair and regeneration in SCI with the hope of improved outcome (www.neuro.wustl.edu/sci/clinicaltrials).

8) Bridging the Gap: Transplant Strategies

As stated above, spinal injury results in a lesion cavity that progresses over time, leaving an anatomically incomplete lesion. Nerve fibers that do demonstrate regenerative growth or collateral sprouting (undamaged nerves cells that sprout) encounter an inhibitory environment as well as a physical gap that requires a permissive bridging substance. Thus bridges such as cells, fetal tissue en bloc, or artificial material have been implanted with some success (22). To date, promising work has been the use of fetal spinal cord transplants into the adult spinal cord in rats, mice, and primates (154). Good host/graft integration is demonstrated in some instances, and appropriate circuitry appears to have been supplied by the fetal transplant by use of morphological and electrophysiological criteria. Moreover, the fetal transplant can chronically alter host metabolic pathways. Numerous studies have demonstrated the survival of transplanted embryonic tissue in the nonimmunosuppressed adult spinal cord. Other research reports the ability of transplanted fetal raphe cells to extend axons through the grey matter of the host spinal cord, form synapses, and demonstrate behavioral improvement (103). Additionally, transplant of fetal tissue into adult spinal cord results in a remarkable decrease or absence of gliosis around the transplant site, even when extensive lesions have been made (19, 65, 66, 127).

There are several clinical trials in Sweden, Florida, Russia, and China in which fetal tissue en bloc has been used in patients with chronic SCI to treat progressive syringomyelia (<http://carecure.rutgers.edu/lectures/SCIHope.htm>). These patients develop post-traumatic syringomyelia, in which a fluid-filled cavity in the spinal cord progressively increases in size, presumably due to progressive orthograde and retrograde degeneration of neural elements. As a result, the patient's behavioral outcome worsens as the pathophysiology progresses. To interfere with the progressive nature of this condition, en bloc fetal spinal tissue was grafted into the syrinx cavity in the

hope that the addition of neurotrophic factors provided by en bloc fetal spinal tissue might result in behavioral improvement. In the case of posttraumatic syringomyelia, outcomes that do not worsen over time, perhaps by inhibiting the progressive neural degeneration, are desirable. These trials demonstrated that the cells survived and some patients demonstrated improved recovery (44, 128, 143).

Implants into the gap composed of Schwann cells, which form the myelin in the peripheral nervous system in which regeneration does occur (22), or multiple grafting of intracostal nerves (31) in rodent models of spinal injury are both approaches in which some regenerating nerve cell axons have been able to grow across the gap, but penetration into the host tissue was not impressive. Some functional recovery was demonstrated in both approaches. Clinical trials in which peripheral nerves are used as bridges are in progress at the University of Sao Paulo, and in Taiwan, where more than 20 patients have received nerve bridges (<http://carecure.rutgers.edu/Lectures/SCIHope.htm>). Similarly, implanted olfactory ensheathing cells have been shown to align, migrate long distances, and promote functional recovery and regeneration through the lesion site in rodents (106). Human neural progenitor cells and embryonic stem cells have been used in rodent spinal injury models and have demonstrated functional recovery (86, 154). Although considerable work in the field of stem cell biology remains (147), there are some clinical trials in Russia in which fetal stem cells are used as transplant sources for chronic SCI or in combination with olfactory ensheathing glial cells. Other transplant sources include transposition of the omentum (Cuba, China, and Italy) and transplantation of embryonic shark cells in Tijuana, Mexico (<http://carecure.rutgers.edu/Lectures/SCIHope.htm>). These latter two approaches lack support from both clinical practitioners and researchers in the United States and are generally thought to lack scientific merit.

Advances in the field of biomatrix material have provided opportunities to bridge the gap with artificial material, such as biodegradable hydrogels or combinations of hydrogels and cells (22), that may promote regeneration. Desired properties of a synthetic bridge are to provide simultaneously a physical substrate for axonal attachment and growth without triggering an

tigenic host reactions. Although this approach is in its infancy, great strides are possible with polymer chemistry (48).

9) Lost Function: Need to Retrain the Brain by Aggressive Physical Therapy

Supported-ambulation studies at the University of California at Los Angeles are in Phase II clinical trials to demonstrate functional improvements in SCI patients after aggressive treadmill training [National Institutes of Health National Institute of Child Health and Human Development, Dept. of Veterans Affairs (VA); clinicaltrials.gov]. Others investigating supported ambulation include the VA Medical Center in Houston, Washington University, The Miami Project, The Burke Institute, and the University of Bonn (139, 140). In most injuries, caudal gray matter such as that in the lumbosacral cord is essentially uninjured; however, after injury, supraspinal systems do not efficiently communicate information with cervical and lumbar elements to initiate stepping and maintain persistent locomotion. After training with supported ambulation, adaptable circuitry can be trained to interpret complex sensory information associated with load-bearing stepping (5, 39, 40, 61, 137, 138). Because locomotion requires coordination of multisegmental connections and given intrinsic CNS plasticity, a very small biological bridge may produce a dramatic impact on locomotor function (148). Of additional relevance, cellular transplants of either mixed or pure culture offer potential for further adaptability, and transfected transplants can stimulate reorganization of intrinsic and extrinsic spinal neural circuits.

Along these lines, aggressive physical therapy and/or other noninvasive therapies should be used in conjunction with invasive interventions. It is apparent that recovery of locomotion is dependent on sensory input that can "reawaken" spinal circuits and activate central pattern generators in the spinal cord, as demonstrated by spontaneous "stepping" in the lower limbs of one patient (26, 27). Sensory input as would occur in aggressive physical therapy may be important, which is consistent with classical works by Sherrington (120) and Grillner (53) on mammalian locomotor neural circuits. Obstacles to aggressive physical therapy for SCI may be budgetary considerations, biases despite duplicative positive scientific

evidence, and lack of knowledge on the part of the physiatrists and healthcare providers.

10) Recovery of Function through Electrical Stimulation

There are a variety of functional electrical stimulation (FES) approaches that may prove useful given the advances being made in electronics. Because the premise of FES is based on transcutaneous or direct electric stimulation of distal ends of innervating nerves, lower motor neurons and peripheral nerves must be intact. Although some systems aid walking, these systems are physically too tiring due to the high energy requirements of the user. However, FES that contributes to improved standing can greatly improve quality of life for the individual and the caregiver. There is considerable interest in computer-controlled FES for strengthening the lower extremities and for cardiovascular conditioning, which has met with some success in terms of physiological improvements such as increased muscle mass, improved blood flow, and better bladder and bowel function. Concomitant with these improvements, decreases in medical complications such as venous thrombosis, osteoporosis, and bone fractures are reported. Stimulation of the phrenic nerve, which innervates the diaphragm, is used in cases where there is damage to respiratory pathways above the origin of the phrenic nerve (C3 or higher) (87). Open clinical trials are in progress at Washington University in which FES units are implanted in the lower extremities to improve standing for patients with SCI. A similar trial is sponsored by the Federal Drug Administration office and is in development at Case Western Reserve University in which FES units are implanted into the pelvis and legs (clinicaltrials.gov).

In particular, restoration of pelvic visceral function after SCI with the Finetech-Brindley (VOCARE) Bladder System [http://www.finetech-medical.co.uk/bladder_system.html (accessed 2002 May 22)] by electrical stimulation of S2, S3, and S4 roots (the roots of origin of pelvic parasympathetic preganglionic and pudendal nerves) can improve bladder and bowel function. It should be noted that the S2, S3, and S4 dorsal roots must be cut for this treatment to be effective. In another example, the Freehand System [NeuroControl; <http://www.neurocontrol.com> (ac-

cessed 2002 May 22)], electrical stimulation is used to produce two different types of grasping via the ulnar nerve (lateral grasp) or median nerve (palmar grasp) and can substantially improve the quality of life (102). Therefore, in the FES approach, return of function is incremental, but improvements in the quality of life are immense. Clinical trials using electrical stimulation to activate spinal cord central pattern generator are in progress at the University of Arizona, and electrical stimulation for subacute SCI is in clinical trials at Purdue University and in Dublin, Ireland (<http://carecure.rutgers.edu/Lectures/SCIHope.htm>). Finally, robotic devices offer an opportunity for improved function, and two clinical trials are in progress, both US sponsored. The wheelchair-mounted robotic arm is in open clinical trials at the VA Medical Center in Houston. Both trials are sponsored by the Department of Veterans Affairs (clinicaltrials.gov) and robotic-assisted upper-extremity rehabilitation at the VA Medical Center in Baltimore.

11) Treating Chronic Central Pain: “Not All in their Head”

SCIs result in a devastating loss of function below the level of the lesion, in which there are variable motor recoveries, and, in the majority of cases, chronic central pain (CCP) syndromes develop (32, 33), usually within several months to years following injury (33, 108, 111). This pain so greatly affects the quality of life that depression and suicide frequently result (25, 119). Research focused on improving recovery of function, including the reduction of CCP, is essential.

Unfortunately, the study of chronic pain after SCI has been neglected. A problematic issue for the majority of SCI patients who experience CCP is that they are given psychiatric referrals, which do not address the pathophysiological mechanisms that underlie the condition. Although advances have been made in the management of acute SCI, there has been little fruitful progress in efforts to bring an understanding of the pathophysiology of CCP to the development of therapeutic approaches for the SCI patient population. Evidence that neurons in pain pathways are pathophysiologically altered and hyperexcitable and thus exhibit central sensitization (144) after spinal cord injury comes from both clinical and animal literature. Perhaps the first widely cited example of spontane-

ously hyperactive and bursting neurons located in the spinal cord was described by Loeser et al. (83) in a patient who suffered chronic pain. That study suggested that the spontaneously hyperactive neurons might be the generator mechanism for the pain experienced following various forms of deafferentation such as brachial avulsions and spinal cord injury. In subsequent studies, spontaneous neuronal hyperactivity was reported in the thalamic nuclei of patients with chronic central pain syndromes (78, 110), suggesting that spontaneous neuronal hyperactivity may be widely distributed throughout the somatosensory pathways.

Work in animal models indicates that the altered behavioral nociceptive states can be explained by a variety of nonexclusive mechanisms (68, 70), including release of spinal cord nociceptive processing from descending inhibition, a permanent increase in receptor activation triggered by the acute increase in the extracellular concentrations of excitatory amino acids (EAAs) induced by SCI, deafferentation hyperexcitability of spinal neurons and/or thalamic neurons, and disinhibition and/or increased efficacy of previously ineffective synapses. In addition, the development of the chronic pain state correlates with structural alterations such as intraspinal sprouting of primary afferent fibers that provide the substrate for maintained hyperexcitability of dorsal horn neurons. We hypothesize that another mechanism of the pain sequelae involves the EAA receptor-mediated development of hyperexcitability of dorsal horn neurons (9, 145), referred to as central sensitization (33, 142, 144, 145). We hypothesize that important components of these changes involve changes in activation state of excitatory and inhibitory receptors and their transporters (54, 91, 92, 130), areas which we are beginning to explore further.

Within the past decade, recognition of central neuropathic pain has led to the successful utilization of nonopioid analgesics delivered by indwelling pump systems or given orally. Compounds such as the γ -aminobutyric acid B (GABA_B) agonist baclofen, once used exclusively in treatment of spasticity (1, 4, 84), and the anticonvulsant gabapentin (Neurontin; Parke-Davis), originally used to treat epilepsy, have had some success with attenuating musculoskeletal (baclofen) and CCP syndromes (gabapentin) (2, 3,

97). The tricyclic antidepressant amitriptyline, shown effective in treatment of dysesthetic pain (113), is also in phase I clinical trials in work funded by NIH. The mechanism of action by which amitriptyline produces analgesia is unclear, but it may be related to inhibition of norepinephrine and serotonin reuptake (8) or other actions (reviewed in Ref. 154). Oral tricyclic antidepressants are used for many CCP syndromes, even those that are refractory to standard therapy including narcotics (49), so results of the amitriptyline trials seem promising.

Most chronic pain studies involve few patients, are poorly designed, and are therefore inconclusive. Few large clinical trials in this area exist. One open clinical trial at the University of Pittsburgh will examine the effects of psychological intervention and physical therapy to improve pain reduction sponsored by NIH-National Institute of Child Health and Human Development (clinicaltrials.gov). Another study, in partnership with Diacrin and Washington University (<http://www.neuro.wustl.edu/sci/clinicaltrials.htm>), is a phase I clinical trial in which porcine fetal neuronal cells are harvested from the lateral ganglionic eminence (LGE) and transplanted into the spinal cord for treatment of chronic pain. The LGE cells produce GABA-secreting cells, which are lost in SCI. Because GABA can inhibit pain circuits (68), the hope is that the LGE cells will attenuate CCP syndromes. Overall, management of chronic pain after SCI is poor and remains a clinical challenge.

FUTURE DIRECTIONS

In the next few years, stem cell therapy will offer opportunities for cell replacement strategies, once the fundamental biology of these cells is known. Additionally, matrix proteins and biomatrix materials will aid in "bridging the gap." Huge advances in the field of electronic circuitry (miniaturization, micromachines) will lead to better FES and robotics devices. Cell transplant strategies will be most useful when one or a few factors are missing; thus chronic pain will benefit first in the current clinical trial applications. Aggressive pharmacological approaches to recovery of function offer another intervention opportunity. For example, the addition of the adenosine antagonist theophylline has been used to enhance residual synaptic drive to spinal respiratory neurons

by blocking adenosine A1 receptors (99), an approach that has proved successful in clinical trials. In another example, serotonin administration by genetically engineered precursor cells transplanted in the region below the level of SCI can improve both locomotor and somatosensory function (55). Finally, the application of DNA microarray analysis and proteomics will allow temporal assessment of large numbers of genes and proteins after SCI (95). As a result, more therapeutic opportunities will become available, as many genes, previously thought to be unimportant, will now be able to be identified with these techniques. In addition, the consequences of therapeutic intervention on the expression levels of vast numbers of genes and proteins will be easily assessed and allow easy prediction of efficacious treatments that are likely to have few contraindications. Because the injured cord is a different molecular environment than an uninjured cord, it is necessary to apply techniques that give a large amount of information toward understanding the effect of a single intervention on gene expression. Thus there is considerable work in progress.

In October 1974, the star running back of the Texas Christian University football team, Kent Waldrep, was stopped by a wall of Alabama tacklers and landed head first on the artificial turf (132). His football career ended with the diagnosis of quadriplegia. The prognosis that was told to Kent and his family was that "nothing can be done." But a new career was born, that of an advocate for spinal cord research. As a patient, Kent found unacceptable the notion that SCI was incurable and that nothing could be done. Despite the skepticism and lack of support by the medical community, Kent decided to seek help at the Palenov Institute in the Soviet Union in a program that predated current supported ambulation therapy. Although the intervention did not help him substantially, it did alert Kent to the problem of the long-accepted dogma in the United States that "nothing can be done" for SCI. At age 25, he formed the American Paralysis Foundation, now reorganized as the Kent Waldrep National Paralysis Foundation. The original organization became a model for the much later-formed Christopher Reeves National Paralysis Foundation. Because of his efforts, coupled with the efforts of a few vocal and prolific young researchers in the late 1970s who reexamined old data and designed

new experiments that demonstrated that nerve cells in the spinal cord can sprout and that rescue of a few nerve cells can result in improved function, dogma for SCI treatment changed. Athletes like Dennis Byrd, who received methylprednisolone within eight hours after SCI, are able to walk again. Thus the current dogma is much revised in that nerve cells in the spinal cord can be rescued, can sprout, and can be directed to grow, and appropriate growth and reconnection can be encouraged. In this millennium, unlike the last, no SCI patient will have to hear “nothing can be done.”

I thank Debbie Pavlu for administrative support and Kathia Johnson for technical assistance and Dr. McAdoo and members of the Hulsebosch laboratory for critical reading of the manuscript.

This work was supported by the Spinal Cord Research Foundation of the Paralyzed Veterans of America, the Kent Waldrep National Paralysis Foundation, the L. T. Hulsebosch Memorial Fund, Mission Connect of TIRR, and National Institute of Neurological Disorders and Stroke Grants NS-11225 and NS-39161.

Address for reprint requests and other correspondence: C. E. Hulsebosch, Dept. of Anatomy and Neurosciences, Marine Biomedical Institute, Univ. of Texas Medical Branch, 301 University Blvd., Galveston, TX 77555-1043 (E-mail: cehulseb@utmb.edu).

Received 30 July 2002; accepted in final form 11 September 2002

REFERENCES

1. **Abel NA and Smith RA.** Intrathecal baclofen for treatment of intractable spinal spasticity. *Arch Phys Med Rehabil* 75: 54–58, 1994.
2. **Ashburn MA and Staats PS.** Management of chronic pain. *Lancet* 353: 1865–1869, 1999.
3. **Attal N, Brasseur L, Parker F, Chauvin M, and Bouhasira D.** Effects of gabapentin on the different components of peripheral and central neuropathic pain syndromes: a pilot study. *Eur Neurol* 40: 191–200, 1998.
4. **Azouvi P, Mane M, Thiebaut JB, Denys P, Remy-Neris O, and Bussel B.** Intrathecal baclofen administration for control of severe spinal spasticity: functional improvement and long-term follow-up. *Arch Phys Med Rehabil* 77: 35–39, 1996.
5. **Barbeau H and Blunt R.** *Plasticity of Motorneuronal Connections.* New York: Elsevier Science, 1991, p. 461–474.
6. **Basso DM, Beattie MS, and Bresnahan JC.** Graded histological and locomotor outcomes after spinal cord contusion using the NYU weight-drop device versus transection. *Exp Neurol* 139: 244–256, 1996.
7. **Beattie MS, Farooqui AA, and Bresnahan JC.** Review of current evidence for apoptosis after spinal cord injury. *J Neurotrauma* 17: 915–925, 2000.
8. **Bendtsen L, Jensen R, and Olesen J.** Amitriptyline, a combined serotonin and noradrenaline re-uptake inhibitor, reduces exteroceptive suppression of temporal muscle activity

in patients with chronic tension-type headache. *Electroencephalogr Clin Neurophysiol* 101: 418–422, 1996.

9. **Bennett AD, Everhart AW, and Hulsebosch CE.** Intrathecal NMDA and non NMDA receptor antagonists reduce mechanical but not thermal allodynia in a rodent model of chronic central pain after spinal cord injury. *Brain Res* 859: 72–82, 2000.
10. **Benowitz LI, Goldberg DE, Madsen JR, Soni D, and Irwin N.** Inosine stimulates extensive axon collateral growth in the rat corticospinal tract after injury. *Proc Natl Acad Sci USA* 96: 13486–13490, 1999.
11. **Berkowitz M, Harvey C, Greene C, and Wilson SE.** *The Economic Consequences of Traumatic Spinal Cord Injury.* New York: Demos, 1992.
12. **Bethea JR, Nagashima H, Acosta MC, Briceno C, Gomez F, Marcillo AE, Loo K, Green J, and Dietrich WD.** Systemically administered interleukin-10 reduces tumor necrosis factor-alpha production and significantly improves functional recovery following traumatic spinal cord injury in rats. *J Neurotrauma* 16: 851–863, 1999.
13. **Blight AR.** Cellular morphology of chronic spinal cord injury in the cat: analysis of myelinated axons by line-sampling. *Neuroscience* 10: 521–543, 1983.
14. **Blight AR and Zimmer MP.** Acute spinal cord injury: pharmacotherapy and drug development perspectives. *Curr Opin Invest Drugs* 2: 801–808, 2001.
15. **Bracken MB and Holford TR.** Effects of timing of methylprednisolone or naloxone administration on recovery of segmental and long-tract neurological function in NASCIS. *J Neurosurg* 79: 500–507, 1993.
16. **Bracken MB, Shepard MJ, Collins WF Jr, Holford TR, Baskin DS, Eisenberg HM, Flamm E, Leo-Summers L, Maroon JC, Marshall LF, Perot PL Jr, Piepmeyer J, Sonntag VKH, Wagner FC Jr, Wilberger JL, Winn HR, and Young W.** Methylprednisolone or naloxone treatment after acute spinal cord injury: 1-year follow-up data. *J Neurosurg* 76: 23–31, 1992.
17. **Bradbury EJ, Moon LDF, Popat RJ, King VR, Bennett GS, Patel PN, Fawcett JW, and McMohon SB.** Chondroitinase ABC promotes functional recovery after spinal cord injury. *Nature* 416: 636–640, 2002.
18. **Bredesen DE.** Apoptosis: overview and signal transduction pathways. *J Neurotrauma* 17: 801–810, 2000.
19. **Bregman BS, and Kunkel-Bagden E.** Effect of target and non-target transplants on neurons survival and axonal elongation after injury to the developing spinal cord. *Prog Brain Res* 78: 205–211, 1988.
20. **Bregman B, Kunkel-Bagden E, Schnell L, Dai HN, Gao D, and Schwab ME.** Recovery from spinal cord injury mediated by antibodies to neurite growth inhibitors. *Nature* 378: 498–501, 1995.
21. **Bricolo A, Ore GD, Da Pian R, and Faccioli F.** Local cooling in spinal cord injury. *Surg Neurol* 6: 101–106, 1976.
22. **Bunge MB.** Bridging areas of injury in the spinal cord. *Neuroscientist* 7: 325–339, 2001.
23. **Bunge RP, Puckett WR, Baccerra JL, Marcillo A, and Quencer RM.** Observations on the pathology of human spinal cord injury. A review and classification of 22 new cases

- with details from a case of chronic cord compression with extensive focal demyelination. *Adv Neurol* 59: 75-89, 1993.
24. **Bunge RP, Puckett WR, and Hiester ED.** Observations on the pathology of several types of human spinal cord injury, with emphasis on the astrocyte response to penetrating injuries. *Adv Neurol* 72: 305-315, 1997.
 25. **Cairns DM, Adkins RH, and Scott MD.** Pain and depression in acute traumatic spinal cord injury: origins of chronic problematic pain. *Arch Phys Med Rehabil* 77: 329-335, 1996.
 26. **Calancie B, Lutton S, and Broton JG.** Central nervous system plasticity after spinal cord injury in man: interlimb reflexes and the influence of cutaneous stimulation. *Electroencephalogr Clin Neurophysiol* 101: 304-315, 1996.
 27. **Calancie B, Needham-Shropshire B, Jacobs P, Willer K, Zych G, and Green BA.** Involuntary stepping after chronic spinal cord injury. Evidence for a central rhythm generator for locomotor in man. *Brain* 117: 1143-159, 1994.
 28. **Caroni P and Schwab ME.** Antibody against myelin-associated inhibitor of neurite growth neutralizes nonpermissive substrate properties of CNS white matter. *Neuron* 1: 85-96, 1988.
 29. **Caroni P and Schwab ME.** Two membrane protein fractions from rat central myelin with inhibitory properties for neurite growth and fibroblast spreading. *J Cell Biol* 106: 1281-1288, 1988.
 30. **Chen MS, Huber AB, van der Haar M, Frank M, Schnell L, Spillmann AA, Christ F, and Schwab ME.** Nogo-A is a myelin-associated neurite outgrowth inhibitor and an antigen for monoclonal antibody IN-1. *Nature* 403: 434-438, 2000.
 31. **Cheng H, Yihai C, and Olson L.** Spinal cord repair in adult paraplegic rats: partial restoration of hind limb function. *Science* 273: 510-513, 1996.
 32. **Christensen MD, Everhart AW, Pickelman JT, and Hulsebosch CE.** Mechanical and thermal allodynia in chronic central pain following spinal cord injury. *Pain* 68: 97-107, 1996.
 33. **Christensen MD and Hulsebosch CE.** Chronic central pain after spinal cord injury. *J Neurotrauma* 14: 517-537, 1997.
 34. **Crowe MJ, Bresnahan JC, Shuman SL, Maasters JN, and Beattie MS.** Apoptosis and delayed degeneration after spinal cord injury in rats and monkeys. *Nat Med* 3: 73-76, 1997.
 35. **DeFelipe J and Jones EG.** *Cajal's Degeneration and Regeneration of the Nervous System*. New York: Oxford, 1991, p. 769.
 36. **Di Iorio P, Virgilio A, Giuliani P, Ballerini P, Vianale G, Middlemiss PJ, Rathbone MP, and Ciccarelli R.** AIT-082 is neuroprotective against kainite-induced neuronal injury in rats. *Exp Neurol* 169: 392-399, 2001.
 37. **Dimitrijevic MR, Faganel J, Lehmkuhl D, and Sherwood A.** Motor control in man after partial or complete spinal cord injury. *Adv Neurol* 39: 915-926, 1983.
 38. **Dougherty PM and Staats PS.** Intrathecal drug therapy for chronic pain: from basic science to clinical practice. *Anesthesiology* 9: 1891-1936, 1999.
 39. **Edgerton VR, De Leon RD, Tillakaratne N, Recktenwald MR, Hodgson JA, and Roy RR.** Use-dependent plasticity in spinal stepping and standing. *Adv Neurol* 72: 233-247, 1997.
 40. **Edgerton VR, Roy RR, De Leon R, Tillakaratne N, and Hodgson JA.** Does motor learning occur in the spinal cord? *Neuroscientist* 3: 287-294, 1997.
 41. **Eldadah BA and Faden AI.** Caspase pathways, neuronal apoptosis, and CNS injury. *J Neurotrauma* 17: 811-829, 2000.
 42. **Emery E, Aldana P, Bunge MB, Puckett W, Srinivasan A, Keane RW, Bethea J, and Levi D.** Apoptosis after trauma human spinal cord injury. *J Neurosurg* 89: 911-920, 1998.
 43. **Faden AI, Lemke M, Simon RP, and Noble L.** N-methyl-D-aspartate antagonist MK801 improves outcome following traumatic spinal cord injury in rats: behavioral, anatomic and neurochemical studies. *J Neurotrauma* 5: 33-45, 1988.
 44. **Falci S, Holtz A, Akesson E, Azizi M, Ertzgaard P, Hultling C, Kjaeldgaard A, Levi R, Ringden O, Westgren M, Lammertse D, and Seiger A.** Obliteration of a posttraumatic spinal cord cyst with solid human embryonic spinal cord grafts: first clinical attempt. *J Neurotrauma* 14: 875-874, 1997.
 45. **Gaviria M, Privat A, d'Arbigny P, Kamenka J-M, Haton H, and Ohanna F.** Neuroprotective effects of a novel NMDA antagonist, Gacyclidine, after experimental contusive spinal cord injury in adult rats. *Brain Res* 874: 200-209, 2000.
 46. **Geisler FH, Coleman WP, Grieco G, and Poonian D.** The Sygen multicenter acute spinal cord injury study. *Spine* 26, Suppl 24: S87-S98, 2001.
 47. **Geisler FH, Coleman WP, Grieco G, and Poonian D.** Measurements and recovery patterns in a multicenter study of acute spinal cord injury. *Spine* 26, Suppl 24: S99-S100, 2001.
 48. **Geller HM and Fawcett JW.** Building a bridge: Engineering spinal cord repair. *Exp Neurol* 174: 125-136, 2002.
 49. **Godfrey RG.** A guide to the understanding and use of tricyclic antidepressants in the overall management of fibromyalgia and other chronic pain syndromes. *Arch Intern Med* 156: 1047-1052, 1996.
 50. **Gorgulo A, Kiris T, Unal F, Turkoglu U, Kucuk M, and Cobanoglu S.** Superoxide dismutase activity and the effects of NBQX and CPP on lipid peroxidation in experimental spinal cord injury. *Res Exp Med (Bertl)* 199: 285-293, 2000.
 51. **Graham SH, Chen J, and Clark RSB.** Bcl-2 family gene products in cerebral ischemia and traumatic brain injury. *J Neurotrauma* 17: 831-841, 2000.
 52. **Grill R, Murai K, Blesch A, Gage FH, and Tuszynski MH.** Cellular delivery of neurotrophin-3 promotes corticospinal axonal growth and partial functional recovery after spinal cord injury. *J Neurosci* 17: 5560-5572, 1997.
 53. **Grillner S.** Locomotion in vertebrates: central mechanisms and reflex interaction. *Physiol Rev* 55: 247-304, 1975.
 54. **Hains BC, Everhart AW, Follwood SD, and Hulsebosch CE.** Changes in serotonin, serotonin transporter expression and serotonin denervation supersensitivity: involvement in chronic central pain after spinal hemisection in the rat. *Exp Neurol* 175: 347-362, 2002.
 55. **Hains BC, Johnson KM, McAdoo DJ, and Hulsebosch CE.** Engraftment of serotonergic precursors enhances locomotor function and attenuates chronic central pain behavior following spinal hemisection injury in the rat. *Exp Neurol* 171: 361-378, 2001.

56. Hains BC, Yucra JA, and Hulsebosch CE. Reduction of pathological and behavioral deficits following spinal cord contusion injury with the selective cyclooxygenase-2 inhibitor NS-398. *J Neurotrauma* 18: 409–423, 2001.
57. Hall ED. Pharmacological treatment of acute spinal cord injury: how do we build on past success? *J Spinal Cord Med* 24: 142–146, 2001.
58. Hall ED and Braugher JM. Non-surgical management of spinal cord injuries: a review of studies with the glucocorticoid steroid methylprednisolone. *Acta Anaesthesiol Belg* 38: 405–409, 1987.
59. Hansebout RR, Blight AR, Fawcett S and Reddy K. 4-Aminopyridine in chronic spinal cord injury: a controlled, double-blind, crossover study in eight patients. *J Neurotrauma* 10: 1–18, 1993.
60. Hansebout RR, Tanner JA, and Romero-Sierra C. Current status of spinal cord cooling in the treatment of acute spinal cord injury. *Spine* 9: 508–511, 1984.
61. Harkema SJ, Hurley SL, Patel UK, Requejo PS, Dobkin BH, and Edgerton VR. Human lumbosacral spinal cord interprets loading during stepping. *J Neurophysiol* 77: 797–811, 1997.
62. Hayes KC, Hsieh JT, Potter PJ, Wolfe DL, Delaney GA, and Blight AR. Effects of induced hypothermia in somatosensory evoked potentials in patients with chronic spinal cord injury. *Paraplegia* 31: 730–741, 1993.
63. Hayes KC, Potter PJ, Wolfe DL, Hsieh JT, Delaney GA, and Blight AR. 4-Aminopyridine-sensitive neurologic deficits in patients with spinal cord injury. *J Neurotrauma* 11: 433–446, 1994.
64. Hentall ID and Sagen J. The alleviation of pain by cell transplantation. *Prog Brain Res* 127: 535–550, 2000.
65. Houle JD. The structural integrity of glial scar tissue associated with a chronic spinal cord lesion can be altered by transplanted fetal spinal cord tissue. *J Neurosci Res* 31: 120–130, 1992.
66. Houle JD and Reier PJ. Transplantation of fetal spinal cord tissue into the chronically injured adult rat spinal cord. *J Comp Neurol* 269: 535–546, 1988.
67. Hulsebosch CE. *Neural Development and Regeneration: Cellular and Molecular Aspects*, edited by Gorio A, deVillis J, Perez-Polo J-R, and Haber B. Berlin: Springer Verlag, 1988, p. 385–398.
68. Hulsebosch CE. *Spinal Cord Injury Pain: Assessment, Mechanisms, Management. Progress in Pain Research and Management*, edited by Yeziarski RP and Burchiel KJ. Seattle WA: IASP Press, 2002, p. 189–204.
69. Hulsebosch CE, Hains BC, Waldrep K, and Young W. Bridging the gap: from discovery to clinical trials in spinal cord injury. *J Neurotrauma* 17: 1117–1128, 2000.
70. Hulsebosch CE, Xu G-Y, Perez-Polo JR, Westlund KN, Taylor CP, and McAdoo DJ. Rodent model of chronic central pain after spinal cord contusion injury and effects of gabapentin. *J Neurotrauma* 17: 1205–1217, 2000.
71. Joester A and Faissner A. The structure and function of tenascins in the nervous system. *Matrix Biol* 20: 13–22, 2001.
72. Jones LL, Oudega M, Bunge MB, and Tuszynski MH. Neurotrophic factors, cellular bridges and gene therapy for spinal cord injury. *J Physiol* 533: 83–89, 2001.
73. Kakulas BA. A review of the neuropathology of human spinal cord injury with emphasis on special features. *J Spinal Cord Med* 22: 119–124, 1999.
74. Klein R. Excitatory Eph receptors and adhesive ephrin ligands. *Curr Opin Cell Biol* 13: 196–203, 2001.
75. Kwon BK and Tetzlaff W. Spinal cord regeneration: from gene to transplants. *Spine* 26, Suppl 24: S13–S22, 2001.
76. Lacroix S and Tuszynski MH. Neurotrophic factors and gene therapy in spinal cord injury. *Neurorehabil Neural Repair* 14: 265–275, 2000.
77. Lali HS, Sekhon LHS, and Fehlings MG. Epidemiology, demographics, and pathophysiology of acute spinal cord injury. *Spine* 26: S2–S12, 2001.
78. Lenz FA, Kwan HC, Martin R, Tasker R, Richardson RT, and Dostrovsky JO. Characteristics of somatotopic organization and spontaneous neuronal activity in the region of the thalamic principal sensory nucleus in patients with spinal cord transection. *J Neurophysiol* 72: 1570–1587, 1994.
79. Li S and Stys PK. Mechanisms of ionotropic glutamate receptor-mediated excitotoxicity in isolated spinal cord white matter. *J Neurosci* 20: 1190–1198, 2000.
80. Liu CN and Chambers WW. Intrasprouting of dorsal root axons. *Arch Neurol Psychiatry* 79: 46–61, 1958.
81. Liu D, Ling X, Wen J, and Liu J. The role of reactive nitrogen species in secondary spinal cord injury: formation of nitric oxide, peroxynitrite, and nitrated protein. *J Neurochem* 75: 2144–2154, 2000.
82. Liu XZ, Xu XM, Hu R, Du C, Zhang SX, McDonald JW, Dong HX, Wu YJ, Fan GS, Jacquin MF, Hsu CY, and Choi DW. Neuronal and glial apoptosis after traumatic spinal cord injury. *J Neurosci* 17: 5395–5406, 1997.
83. Loeser JD, Ward AA, and White LE. Chronic deafferentation of human spinal cord neurons. *J Neurosurg* 29: 48–50, 1968.
84. Loubser PG and Akman NM. Effects of intrathecal baclofen on chronic spinal cord injury pain. *J Pain Symptom Manage* 12: 241–247, 1996.
85. Lu J and Ashwell K. Olfactory ensheathing cells: their potential use for repairing the injured spinal cord. *Spine* 27: 887–892, 2002.
86. McDonald JW, Liu XZ, Qu Y, Liu S, Mickey SK, Turetsky D, Gottlieb DI, and Choi DW. Transplanted embryonic stem cells survive, differentiate and promote recovery in injured rat spinal cord. *Nat Med* 5: 1410–1412, 1999.
87. McDonald JW and Sadowsky C. Spinal-cord injury. *Lancet* 359: 417–425, 2002.
88. McGraw J, Hiebert GW, Steeves JD. Modulating astrogliosis after neurotrauma. *J Neurosci Res* 63: 109–115, 2001.
89. McKerracher L. Spinal cord repair: strategies to promote axon regeneration. *Neurobiol Dis* 8: 11–18, 2001.
90. McKerracher L, David S, Jackson JL, Kottis V, Dunn R, and Braun PE. Identification of myelin-associated glycoprotein as a major myelin-derived inhibitor of neurite outgrowth. *Neuron* 13: 805–811, 1994.

91. **Mills CD and Hulsebosch CE.** Increased expression of metabotropic glutamate receptor subtype 1 on spinothalamic tract neurons following spinal cord injury in the rat. *Neurosci Lett* 319: 59-62, 2002.
92. **Mills CD, Johnson KM, and Hulsebosch CE.** Group I metabotropic glutamate receptors in spinal cord injury: roles in neuroprotection and the development of chronic central pain. *J Neurotrauma* 19: 23-42, 2002.
93. **Mukhopadhyay G, Doherty P, Walsh FS, Crocker PR, and Filbin MT.** A novel role for the myelin-associated glycoprotein as an inhibitor of axonal regeneration. *Neuron* 13: 805-811, 1994.
94. **Murray M and Fischer I.** Transplantation and gene therapy: combined approaches for repair of spinal cord injury. *Neuroscientist* 7: 28-41, 2001.
95. **Nesic O, Svrakic NM, Xu G-Y, McAdoo D, Westlund KN, Hulsebosch CE, Ye Z, Galante A, Soteropoulos P, Toliaas P, Young W, Hart RP, and Perez-Polo JR.** DNA microarray analysis of the contused spinal cord: effect of NMDA receptor inhibition. *J Neurosci Res* 68: 406-423, 2002.
96. **Nesic O, Xu GY, McAdoo D, High KW, Hulsebosch C, and Perez-Polo R.** IL-1 receptor antagonist prevents apoptosis and caspase-3 activation after spinal cord injury. *J Neurotrauma* 18: 947-956, 2001.
97. **Ness TJ, San Pedro EC, Richards JS, Kezar L, Liu H-G, and Mountz JM.** A case of spinal cord injury-related pain with baseline rCBF brain SPECT imaging and beneficial response to gabapentin. *Pain* 78: 139-143, 1998.
98. **Pasterkamp RJ and Verhaagen J.** Emerging roles for semaphorins in neural regeneration. *Brain Res Brain Res Rev* 35: 36-54, 2001.
99. **Phillis JW and Goshgarian HG.** Adenosine and neurotrauma: therapeutic perspectives. *Neurol Res* 23: 183-189, 2001.
100. **Plunet W, Kwon BK, and Tetzlaff W.** Promoting axonal regeneration in the central nervous system by enhancing the cell body response to axotomy. *J Neurosci Res* 68: 1-6, 2002.
101. **Poulsen DJ, Harrop JS, and During MJ.** New avenues: exploring approaches for gene therapy in the injured spinal cord. *J Spinal Cord Med* 25: 10, 2002.
102. **Pourmehdi S, Strojnik P, Peckham H, Buckett J, and Smith B.** A custom designed chip to control an implantable stimulator and telemetry system for control of paralyzed muscles. *Artif Organs* 23: 396-398, 1999.
103. **Privat A, Mansour H, Rajaofetra N, and Geffard M.** Intrasplinal transplants of serotonergic neurons in the adult rat. *Brain Res Bull* 22: 123-129, 1989.
104. **Qiu J, Cai D, Dai H, McAtee M, Hoffman PN, Bregman BS, and Filbin MT.** Spinal axon regeneration induced by elevation of cyclic AMP. *Neuron* 34: 895-903, 2002.
105. **Ramer MS, Priestley JV, and McMahon SB.** Functional regeneration of sensory axons into the adult spinal cord. *Nature* 403: 312-316, 2000.
106. **Ramon-Cueto A, Plant GW, Avila J, and Bunge MB.** Long-distance axonal regeneration in the transected adult rat spinal cord is promoted by olfactory ensheathing glia transplants. *J Neurosci* 18: 3803-3815, 1998.
107. **Resnick DK, Graham SH, Dixon CE, and Marion DW.** Role of cyclooxygenase 2 in acute spinal cord injury. *J Neurotrauma* 15: 1005-1013, 1998.
108. **Richards JS, Meredith RL, Nepomuceno C, Fine PR, and Bennett G.** Psycho-social aspects of chronic pain in spinal cord injury. *Pain* 8: 355-366, 1980.
109. **Richardson PM, McGuinness UM, and Aguayo AJ.** Axons from CNS neurons regenerate into PNS grafts. *Nature* 284: 264-265, 1980.
110. **Rinaldi PC, Young RF, Albe-Fessard D, and Chodakiewicz J.** Spontaneous hyperactivity in the medial and intralaminar thalamic nuclei of patients with deafferentation pain. *J Neurosurg* 74: 415-421, 1991.
111. **Rintala DH, Loubser PG, Castro J, Hart KA, and Fuhrer MJ.** Chronic pain in a community-based sample of men with spinal cord injury: prevalence, severity, and relationship with impairment, disability, handicap, and subjective well-being. *Arch Phys Med Rehabil* 79: 604-614, 1998.
112. **Rosenberg LJ, Teng YD, and Wrathall JR.** 2,3-Dihydroxy-6-nitro-7-sulfamoyl-benzo(f)quinoxaline reduces glial loss and acute white matter pathology after experimental spinal cord contusion. *J Neurosci* 19: 464-475, 1999.
113. **Sandford PR, Lindblom LB, and Haddox JD.** Amitriptyline and carbamazepine in the treatment of dysesthetic pain in spinal cord injury. *Arch Phys Med Rehabil* 73: 300-301, 1992.
114. **Satake K, Matsuyama Y, Kamiya H, Iwata H, Adachi K, and Kluchi K.** Nitric oxide via macrophage INOS induces apoptosis following traumatic spinal cord injury. *Brain Res Mol Brain Res* 85: 114-122, 2000.
115. **Schnell L and Schwab ME.** Axonal regeneration in the rat spinal cord produced by an antibody against myelin-associated neurite growth inhibitors. *Nature* 343: 269-272, 1990.
116. **Schwab ME.** Repairing the injured spinal cord. *Science* 295: 1029-1031, 2002.
117. **Segal JL and Brunneemann SR.** 4-Aminopyridine alters gait characteristics and enhances locomotion in spinal cord injured humans. *J Spinal Cord Med* 21: 200-204, 1998.
118. **Segal JL, Pathak MS, Hernandez JP, Hember PL, Brunneemann SR, and Charter RS.** Safety and efficacy of 4-aminopyridine in humans with spinal cord injury: a long-term, controlled trial. *Pharmacotherapy* 19: 713-723, 1999.
119. **Segatore M.** Understanding chronic pain after spinal cord injury. *J Neurosci Nurs* 26: 230-236, 1994.
120. **Sherrington CS.** Flexion-reflex of the limb, crossed extension-reflex, and reflex stepping and standing. *J Physiol* 40: 28-121, 1910.
121. **Shibata M, Murray M, Tessler A, Ljubetic C, Connors T, and Saavedra RA.** Single injections of a DNA plasmid that contains the human Bcl-2 gene prevent loss and atrophy of distinct neuronal populations after spinal cord injury in adult rats. *Neurorehabil Neural Repair* 14: 319-330, 2000.
122. **Stichel CC and Muller HW.** Experimental strategies to promote axonal regeneration after traumatic central nervous system injury. *Prog Neurobiol* 56: 119-148, 1998.
123. **Takami T, Oudega M, Bethea JR, Wood PM, Kleitman N, and Bunge MB.** Methylprednisolone and interleukin-10 reduce gray matter damage in the contused Fisher rat thoracic

- spinal cord but do not improve functional outcome. *J Neurotrauma* 19: 653-666, 2002.
124. **Tator CH.** Update on the pathophysiology and pathology of acute spinal cord injury. *Brain Pathol* 5: 407-413, 1995.
 125. **Tator CH.** Experimental and clinical studies of the pathophysiology and management of acute spinal cord injury. *J Spinal Cord Med* 19: 206-214, 1996.
 126. **Tator CH.** Biology of neurological recovery and functional restoration after spinal cord injury. *Neurosurgery* 42: 696-708, 1998.
 127. **Tessler A.** Intraspinal transplants. *Ann Neurol* 29: 115-123, 1991.
 128. **Thompson FJ, Reier PJ, Uthman B, Mott S, Fessler RG, Behrman A, Trimble M, Anderson DK, and Wirth ED.** Neurophysiological assessment of the feasibility and safety of neural tissue transplantation in patients with syringomyelia. *J Neurotrauma* 19: 931-945, 2001.
 129. **Tisherman SA, Rodriguez A, and Safar P.** Therapeutic hypothermia in traumatology. *Surg Clin North Am* 79: 1269-1289, 1999.
 130. **Vera-Portocarrero LP, Mills CD, Ye Z, Fullwood SD, McAdoo DJ, Hulsebosch CE, and Westlund KN.** Rapid changes in expression of glutamate transporters after spinal cord injury. *Brain Res* 927: 104-110, 2002.
 131. **Wada S, Yone K, Ishidou Y, Nagamine T, Nakahara S, Nilyama T, and Sakou T.** Apoptosis following spinal cord injury in rats and preventive effect of N-methyl-D-aspartate receptor antagonist. *J Neurosurg* 91: 98-104, 1999.
 132. **Waldrep K and Malone SM.** *Fourth and Long.* New York: Crossroad/Herder and Herder, 1996.
 133. **Wamil AW, Wamil BD, and Hellerqvist CG.** CM101-mediated recovery of walking ability in adult mice paralyzed by spinal cord injury. *Proc Natl Acad Sci USA* 95: 13188-13193, 1998.
 134. **Waxman SG.** Acquired channelopathies in nerve injury and MS. *Neurology* 56: 1621-1627, 2001.
 135. **Waxman SG, Cummins TR, Dib-Hajj SD, and Black JA.** Voltage-gated sodium channels and the molecular pathogenesis of pain: a review. *J Rehabil Res Dev* 37: 517-528, 2000.
 136. **Weidner N, Blesch A, Grill RJ, and Tuszynski MH.** Nerve growth factor-hypersecreting Schwann cell grafts augment and guide spinal cord axonal growth and remyelinate central nervous system axons in a phenotypically appropriate manner that correlates with expression of L1. *J Comp Neurol* 413: 495-506, 1999.
 137. **Wernig A and Muller S.** Improvement in spinal cord injured persons after treadmill training. Amsterdam: Elsevier Science, 1991, p. 475-485.
 138. **Wernig A, Muller S, Nanassy A, and Cagol E.** Laufband therapy based on "rules of spinal locomotion" is effective in spinal cord injured persons. *Eur J Neurosci* 7: 823-829, 1995.
 139. **Wernig A, Nanassy A, and Muller S.** Maintenance of locomotor abilities following Laufband (treadmill) therapy in paraplegic persons: follow-up studies. *Spinal Cord* 36: 744-749, 1998.
 140. **Wernig A, Nanassy A, and Muller S.** Laufband (treadmill) therapy in incomplete paraplegia and tetraplegia. *J Neurotrauma* 16: 719-726, 1999.
 141. **Whittemore SR, Zhang YP, Shields CB, Morassutti DJ, and Magnuson DS.** Optimizing stem cell grafting into the CNS. *Methods Mol Biol* 198: 319-325, 2002.
 142. **Willis WD Jr.** Central sensitization and plasticity following intense noxious stimulation. In: *Basic and Clinical Aspects of Chronic Abdominal Pain*, edited by Moyer EA and Raybould HE. Amsterdam: Elsevier Science, 1993, p. 201-217.
 143. **Wirth ED, Reier PJ, Fessler RG, Thompson FJ, Uthman B, Behrman A, Beard J, Vierck CJ, and Anderson DK.** Feasibility and safety of neural tissue transplantation in patients with syringomyelia. *J Neurotrauma* 18: 911-929, 2001.
 144. **Woolf CJ.** Evidence for a central component of post-injury pain hypersensitivity. *Nature* 306: 686-688, 1983.
 145. **Woolf CJ and Thompson SWN.** The induction and maintenance of central sensitization is dependent on N-methyl-D-aspartic acid receptor activation; implications for the treatment of post-injury pain hypersensitivity states. *Pain* 44: 293-299, 1991.
 146. **Wrathall JR, Teng YD, and Choiniere D.** Amelioration of functional deficits from spinal cord trauma with systemically administered NBQX, an antagonist of non-N-methyl-D-aspartate receptors. *Exp Neurol* 137: 119-126, 1996.
 147. **Wu P, Ye Y, and Svendsen CN.** Transduction of human neural progenitor cells using recombinant adeno-associated viral vectors. *Gene Ther* 9: 245-255, 2002.
 148. **Xu XM, Chen A, Guenard V, Kleitman N, and Bunge MB.** Bridging Schwann cell transplants promote axonal regeneration from both the rostral and caudal stumps of transected adult rat spinal cord. *J Neurocytol* 26: 1-16, 1997.
 149. **Yamaguchi Y.** Heparan sulfate proteoglycans in the nervous system: their diverse roles in neurogenesis, axon guidance, and synaptogenesis. *Semin Cell Dev Biol* 12: 99-106, 2001.
 150. **Yamamoto T, and Nozaki-Taguchi N.** Analysis of the effects of cyclooxygenase (COX)-1 and COX-2 in spinal nociceptive transmission using indomethacin, a non-selective COX inhibitor, and NS-398, a COX-2 selective inhibitor. *Brain Res* 739: 104-110, 1996.
 151. **Yu CG, Marcillo AE, Fairbanks CA, Wilcox GL, and Yeziarski RP.** Agmatine improves locomotor function and reduces tissue damage following spinal cord injury. *Neuroreport* 11: 3203-3207, 2000.
 152. **Yu TW and Bargmann CI.** Dynamic regulation of axon guidance. *Nat Neurosci Suppl* 4: 1169-1176, 2001.
 153. **Yüceer N, Attar A, Sargon MF, Egemen N, Türker RK, and Demirel E.** The early protective effects of L-arginine and N γ -nitro-L-arginine methyl ester after experimental acute spinal cord injury. A light and electron microscopic study. *J Clin Neurosci* 7: 238-243, 2000.
 154. **Zompa EA, Cain LD, Everhart AW, Moyer MP, and Hulsebosch CE.** Transplant therapy: recovery of function after spinal cord injury. *J Neurotrauma* 14: 479-506, 1997.